

# BTM410–411 Development Kit

Quick Start Guide

v. 1.1

## OVERVIEW

This quick start guide for the Laird Technologies OEM BTM41x family Developer Kit (DVK) illustrates how to read the radio's configuration and perform a data throughput test between the two radios. For more detailed information on these steps, refer to the DVK User's Manual or the radio User's Manual.

## WHAT'S IN THE BOX

- BTM41x Development Board
- USB Cable
- Whip Antenna (only for BTM410)
- Bluetooth® USB dongle
- Software CD
  - EZURiO Terminal
  - FTDI USB to RS232 driver
  - BTM41x datasheet
  - Laird Technologies Bluetooth® line card

Updated datasheets and firmware are available at [www.lairdtech.com/wireless](http://www.lairdtech.com/wireless).

Additionally, you need a Windows PC running Windows XP SP2 or later.

## BLUETOOTH USB DONGLE INSTALLATION

1. Uninstall all third-party Bluetooth stacks, drivers and devices from your PC.
2. Plug the Laird Technologies USB dongle into the PC. Windows XP SP2 detects the device and opens an installation window.
3. Follow the on-screen instructions to install the standard Microsoft Bluetooth driver.
4. Open the Windows Device Manager.
5. Verify that the Microsoft Bluetooth Enumerator and TDK Bluetooth USB Adaptor are installed.

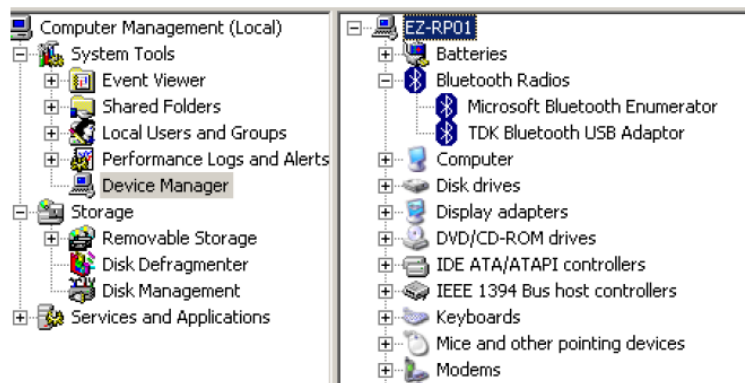


Figure 1: Microsoft Bluetooth Enumerator and TDK Bluetooth USB Adaptor are present

**Note:** You must have at least Windows XP SP2 to install the Microsoft Bluetooth 2.0 driver for the Laird Technologies USB Dongle. Windows Vista SP1 and Windows 7 support Bluetooth 2.1. Microsoft does not provide a Bluetooth 2.1 driver for Windows XP. Since the USB dongle only supports Bluetooth 2.0+EDR, it does not have Bluetooth 2.1 functionality on Windows Vista or 7.

## DEVELOPMENT BOARD SETUP

1. Connect the USB Cable (used for power and communications) from PC to development board.
  - a. On the first connection, you must install the USB to RS232 driver. Download the latest WHQL-qualified driver from [www.ftdichip.com](http://www.ftdichip.com).
  - b. Point the Windows driver install wizard to the location of the downloaded driver.
  - c. Optionally, you can power the device via 5 V DC.
2. Select the power source via the 3-way switch.
  - Center = off
  - DC = power via USB
  - USB = power via DC
3. Start EZURiO Terminal.
4. Select the correct COM Port (refer to Device Manager, if necessary).
5. Select BAUD rate (default is 9600 bps).
6. Check the CTS LED in EZURiO Terminal. If it is green, it is connected to the correct COM port.

## AT MODE BASIC COMMAND REFERENCE

Command	Response
AT	OK
AT+I3	Firmware version number
AT+I4	Bluetooth Address
AT+BTIN	List discoverable Bluetooth devices with friendly name
AT&F*	Reset to factory default
AT&W	Save settings to non-volatile memory
ATZ	Software reset
ATD<BT Address>	Call BT device
ATH	Hang up connection
^^^	Local Command Mode

## DATA CONNECTION (PC -> BTM41x)

Set up the module:

1. Start EZURiO Terminal (included on CD or downloadable from [www.lairdtech.com/wireless](http://www.lairdtech.com/wireless)).
2. Enter the following commands:

```
AT&F*           // reset to factory defaults
ATS512=4       // make device discoverable and connectable
ATS0=1         // auto answer after 1 ring
AT+BTCK="1234" // set the pin code
AT&W           // save the settings to flash memory
ATZ            // software reset the device
```
3. Open Bluetooth devices (Control Panel -> Bluetooth devices).
4. If you don't see Bluetooth devices, your USB dongle is not properly installed. Either the installer failed or you have a third-party driver installed. Please follow the [steps for USB Installation](#).
5. Click **Add Device**.
6. Search for available devices, then select the desired device.
7. Select the BTM41x module.

8. Enter the passkey. This is the pin code setup above in step 2 using the AT+BTK command.
9. The wizard displays incoming and outgoing ports that have been opened (Figure 2).



Figure 2: Successfully adding a Bluetooth device

## DATA CONNECTION (BTM41X -> PC)

To set up the module, complete the following steps:

1. Start EZURiO Terminal.
2. Enter the following commands:

```
AT&F*           // reset to factory defaults
ATS512=4        // make device discoverable and connectable
ATS0=1          // auto answer after 1 ring
AT+BTK="1234"   // set the pin code
AT&W           // save the settings to flash memory
ATZ            // software reset the device.
AT+BTIN        // scan for discoverable Bluetooth devices
AT+BTW<Bluetooth ID of USB dongle>
```
3. On the PC, a pop up balloon appears saying "Incoming connection." Enter your passkey ("1234" in the example above, set with AT+BTK). Your devices should now be paired.
4. Go to **Control Panel > Devices > COM port** tab and add an incoming COM port.
5. Use the EZURiO Terminal to open the incoming COM port.
6. Notice that the CSR and DSR LEDs are red on the EZURiO Terminal.
7. Send the following command to the module:

```
ATD<Bluetooth ID of the USB dongle>
```

(The ID is found by searching for discoverable devices using the AT+BTIN command.)
8. Connection is auto-accepted by the PC. If CSR and DSR LEDs are green, the connection is active.
9. Use ^^^ to escape to command mode and enter ATH to hang up the connection.

## DATA CABLE REPLACEMENT

### Set up the module:

1. Start EZURiO Terminal. Enter the following commands.  

```
AT&F*           // reset to factory defaults
ATS512=1       // turn on the radio
ATS505=3       // connection attempt timeout
ATS530=5000    // reconnect delay
ATS535=2       // Link supervision timeout
AT+BTK="1234"  // set the pin code
AT+BTW        // to initiate the pairing process
AT+BT         // to store the cached link key
AT+BTR<Bluetooth Address of the USB dongle>
AT&W          // save the settings to flash memory
ATZ           // software reset the device.
```
2. Turn off the module.

### On the PC:

1. A pop up message on your PC appears saying "Incoming Connection." Enter your passkey ("1234" in the example, configured with AT+BTK). Your devices should now be paired.
2. Click **Control Panel >Devices > COM Port**.
3. Add an incoming COM port.
4. Use EZURiO Terminal to open the incoming COM port. Notice the CSR and DSR LEDs are red.
5. Power on the BTM41x board. It automatically connects to USB dongle and the DCD LED is green when connected.

## EZURiO TERMINAL COM PORT SETTINGS

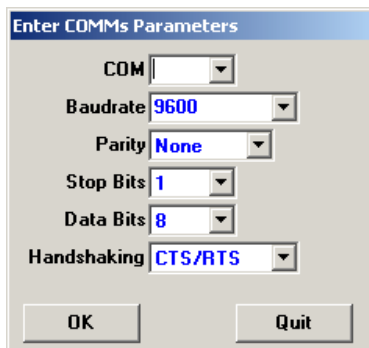


Figure 3: COMMS settings in Ezurio Terminal

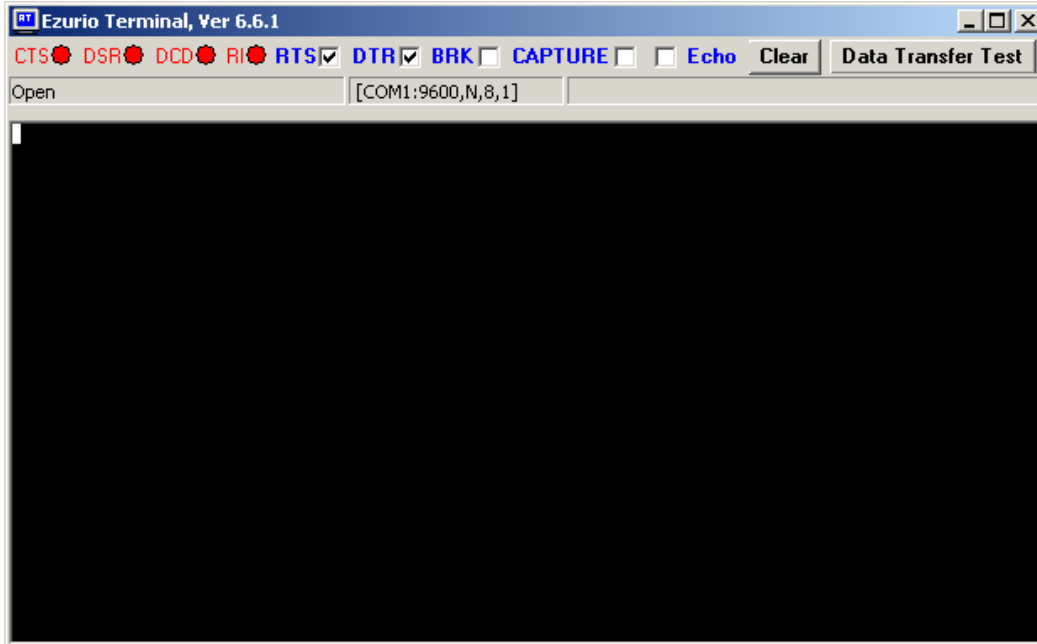
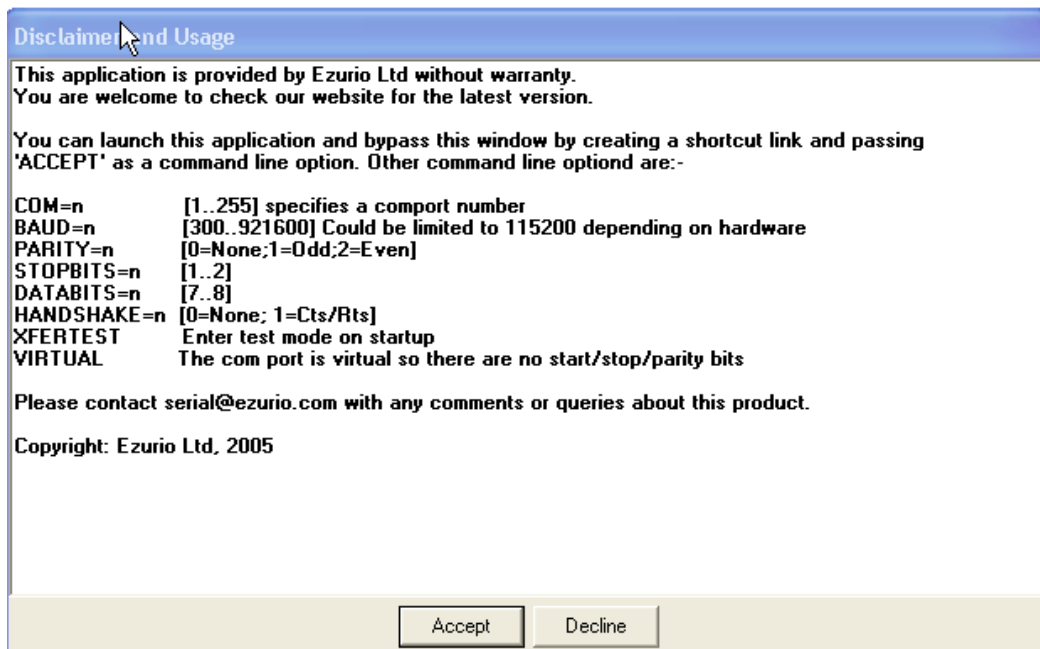


Figure 4: Ezurio Terminal settings (RTS, DTR, and COM Port)



## REVISION HISTORY

Revision	Date	Description	Approved By
1.0	26 June 2013	Initial Release	Jonathan Kaye
1.1	03 Mar 2015	Added Revision History	Sue White